

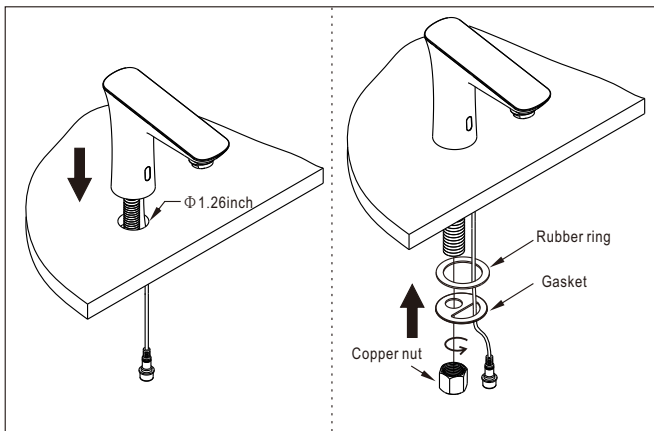
INSTALLATION GUIDE

F600J

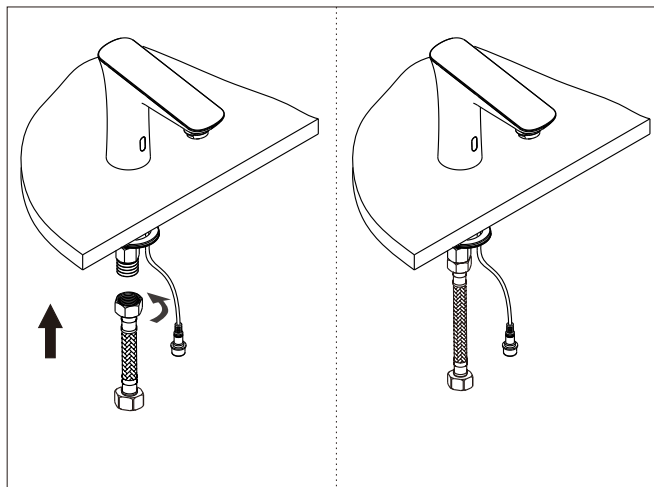
Faucet installation

Step 1: Open an hole with 1.26inch diameter on the basin and put the faucet into the hole.

Step 2: Insert the rubber ring, gasket into the copper threaded tube from the bottom and tighten it with copper nut.



Step 3: Connect the G1/2" Braided water supply pipe with faucet body tightly.

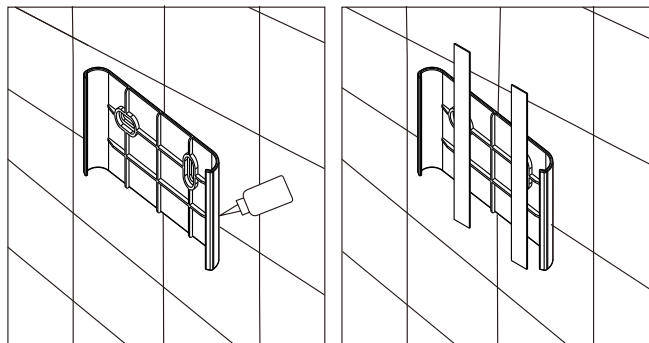


Installation of water mixer box

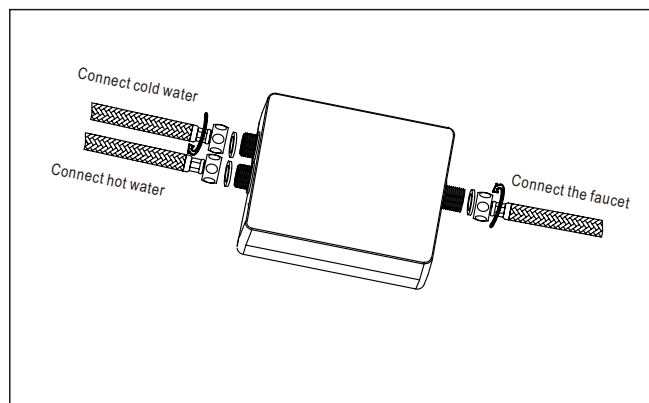
Method 1 (No drilling installation)

Step 1: Evenly smear nail free adhesive on the back of the mounting bracket and stick it on the wall.

Step 2: Fix the mounting bracket with the rubber strip we provided as shown in the drawing until the nail-free glue solidifies.



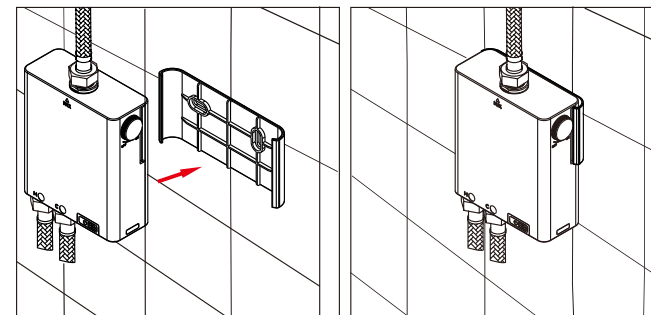
Step 3: Connect the braided pipe of the faucet and connect the cold and hot water pipes, Tighten the connection to ensure good sealing.



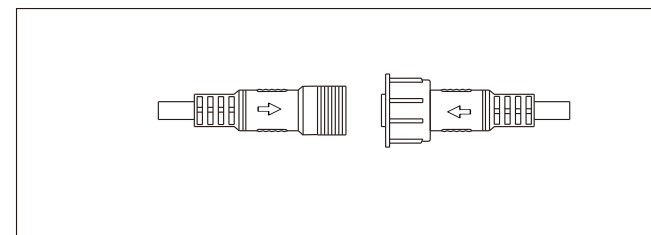
Note:

1. Hot and cold water inlet pipes could not be connected wrong, otherwise the system can not work properly!
2. Tighten the torque of the joint nut, according to the NATIONAL standard generally use 2.5NM, the maximum force should not exceed 8NM, otherwise it may damage the joint of the mixing valve, resulting in water leakage in the system.

Step 4: Remove the fixed rubber strip and clamp the water mixer box to the bracket according to the direction shown in the picture (**Note:** The direction of the mounting bracket cannot be reversed)



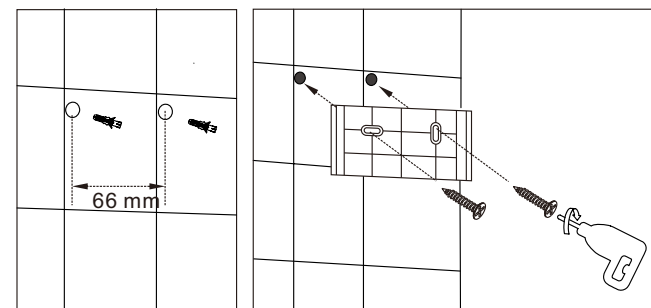
Step 5: Connect the control cable between the water mixer box and the faucet according to the arrow. The installation is completed.



Method 2 (Drilling installation)

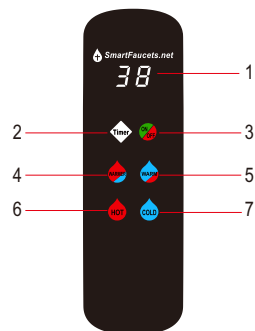
Step 1: Drill 2 installation holes with diameter of 8mm in the corresponding positions of the dimensions shown in the drawing and embed them. Insert plastic plug.

Step 2: Fix the mounting bracket of the water mixer box with ST4×25 screws as shown in the picture.



Step 3 - Step 5: Same as installation method 1.

Operation



1. Display area
2. Water TEMP. adjust
3. Power ON/OFF
4. Warmer
5. Warm
6. Hot water
7. Cold water

Standby

When system is electrified, system is in standby state. no display and no background.

Power ON

When system is in standby state, touch any TEMP. button (HOT, COLD, WARMER, WARM) to turn on the faucet, outlet water TEMP. is same as preset water TEMP on relative TEMP. button. Display window shows countdown working time. Button (Timer) background shows current water TEMP. .

When system is in standby, touching button (ON/OFF) or hand sweep within 8cm of front sensor to power on the faucet. Be sure to stay hand for more than 0.1second when approaching the front sensor so the sensor can receive the signal.

Power off

Default working time is 5seconds, faucet stop working when time is up. Or you could power off the faucet by touching button (ON/OFF).

Water TEMP. setting

When faucet power off, power on the faucet by front sensor or by Touching the power ON/OFF button. Default water TEMP. is 80°F.

When faucet is in standby. touching temperature button (HOT, COLD, WARMER, WARM) to get faucet ON, water temperature will be same as preset temperature of related button. When touching button (HOT, COLD), water

Temperature is 95°F(equal to 35°C), when touching button (WARMER), water temperature is 80°F(equal to 27°C), when touching button (HOT), water temperature is 110°F(equal to 43°C), when touching button (COLD), water temperature is cold water. Timer button backlight color will be changed once touching temperature button for 1seconds, after that, timer button backlight show relative color of current water temperature. Pressing button (WARMER), timer backlight is purple. Pressing button (WARM), timer backlight is green, pressing button (HOT), timer backlight is red, pressing button (COLD), timer backlight is blue.

Timer backlight flash one time when touching any temperature button, after that, timer button backlight shows real water temperature color.

When water temperature is at 80°F(27°C), timer button (Timer) backlight shows blue. When water temperature is from 80-95°F(27-35°C), timer button (Timer) backlight shows green, when water temperature is from 95-110°F(35-43°C), timer button (Timer) backlight shows purple, when water temperature is 110°F(43°C) or higher, timer button (Timer) backlight shows red.

Working time setting

When faucet is on, default working time is 5seconds, touching button (Timer) to set working time, when time is in countdown state, touching button (Timer) one time to set working time to be 10seconds, touching timer button (Timer) one more time to set working time to be 20seconds. Time setting is 10seconds as step by one touching. 10-20-30-40-50-60seconds as one cycle. Time setting will not be saved for next time using, default working time is 5seconds for every using.

Overheat protect

When faucet is on, outlet water temperature is up to 49°C for 3seconds, system will be off automatically.

Low battery

When battery is almost use out, display window shows b0 and flash, window display working time after two seconds.

Error code

When window display "EE", means the communication is fail, suggest to check the connection between the control panel and control box. Faucet will be off in 5seconds after detected error code.

Manual scanning sensing distance setting

Before setting sensor distance, place a whiteboard 12CM away from the manual scan sensor window, within 5 seconds after faucet power off, keep pressing button (Timer) for 2 seconds, button backlight is white and touching button (Timer) again immediately. faucet enter into

Sensor distance setting state. window display "A0" means faucet is in distance setting, when window display "AA", means setting successfully. When window display "AE", means the white board distance is too far(signal voltage is less than 0.4V), sensor distance setting fail, when window display "AF", means the white board distance is too close(signal voltage is more than 2.9V), sensor distance setting fail. After sensor distance setting is successful, new sensor distance will be saved for next time using. If setting is fail, sensor distance will be the preset sensor distance. Farthest sensor distance setting can be 8±1cm.

Technical parameter

Working conditions and technical data					
Rated voltage	AC100-240	Rated frequency	50/60Hz	Rated power	5W
Insulation resistance	>20MΩ	Waterproof rating	IPX4		
Load matching					
Loading	Rated voltage	Frequency	Rated power	Other	
Water flow valve	DC5V	-	1W	-	
Water mixer valve	DC12V	-	2W	-	